

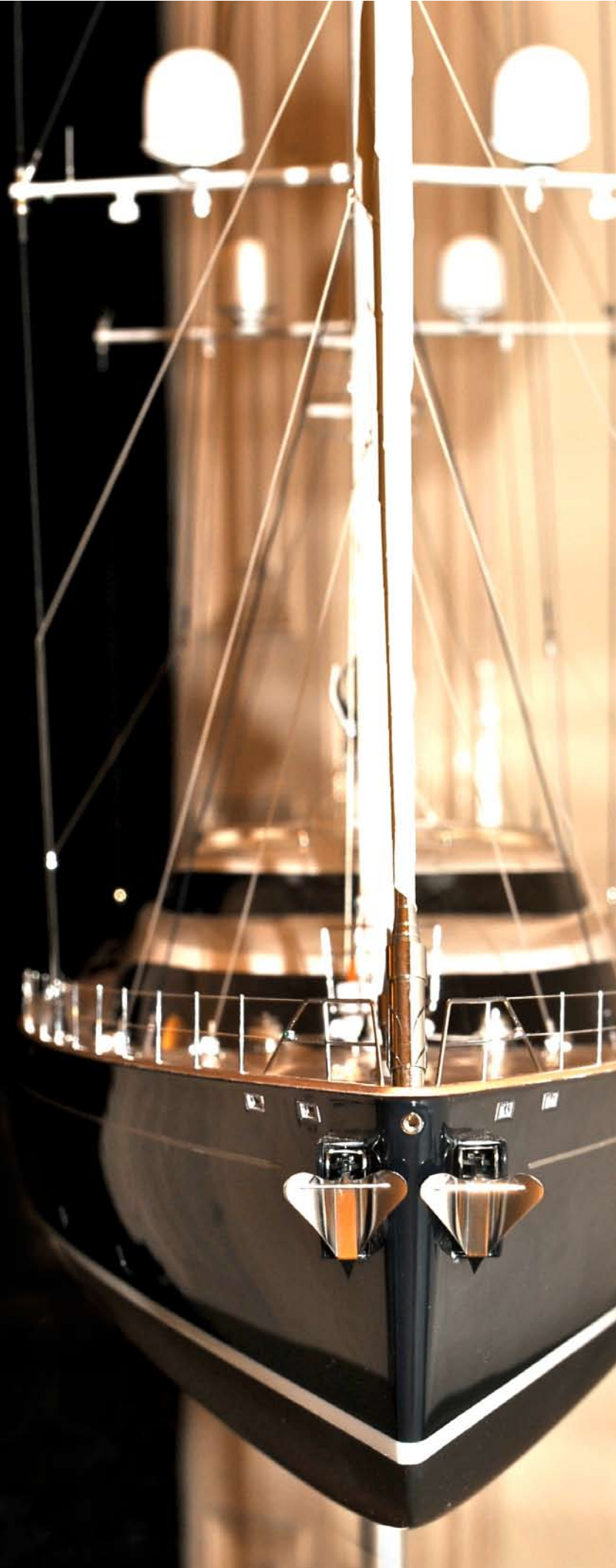
# TWIZZLE

A new breed of Sailing Yacht, is about to be launched, a magnificent fly-bridge ketch with towering carbon-fibre masts, rigging and acres of high tech sails.



Twizzle is the result of the owner's vision of a high performance, high tech sailing yacht with the cruising capability, the comfort and the luxury of a motor yacht.

Twizzle's beauty is equalled by its superb performance under sail. Unrivalled specifications and an unparalleled quality of build make Twizzle the perfect Sailing Yacht, whether racing in Superyacht regattas or hoisting its sails in minutes to take advantage of even the gentlest breeze.



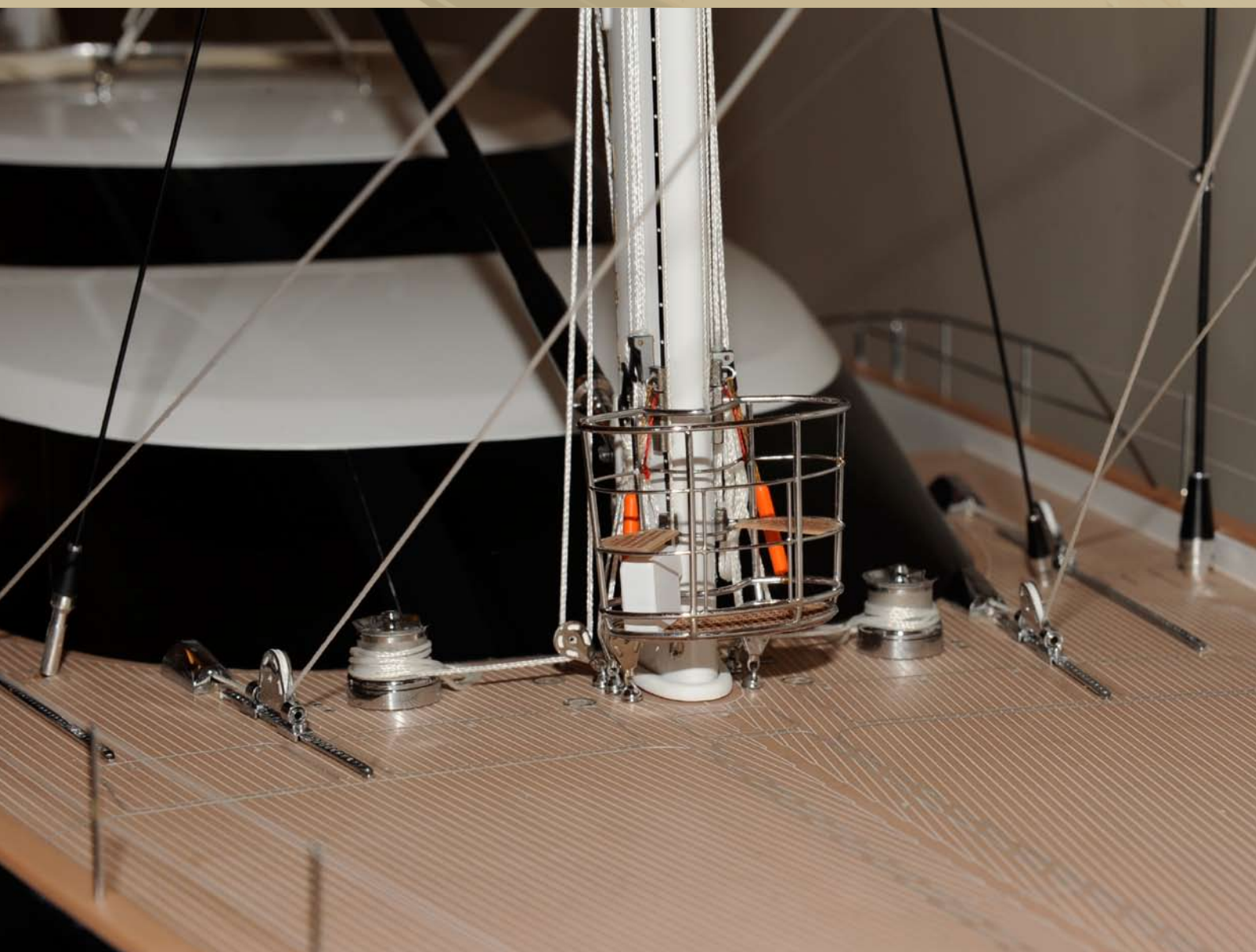
A world-class design team has created the definitive Sailing Yacht.

From a background in large Motor Yachts, the owners joined forces with the multi-disciplined and multi-talented team of Redman Whitley Dixon, Dubois Naval Architects and Todhunter Earle Interiors to realize their dream of building a high-performance Sailing Yacht in which they could both race and explore the world.

Guest comfort and facilities are unprecedented in a Sailing Yacht, with the most comprehensive communications, Sat-TV, Broadband Internet and audio/visual and DVD server systems.

The Legendary Royal Huisman Shipyard was the obvious choice for such an ambitious and prestigious project.

**The result is this elegant and graceful 57.5m fly-bridge ketch.**



# A sailing yacht that combines grace, comfort and effortless style

Twizzle has a welcoming, relaxed and luxurious feel.

Behind the restrained glamour of her interior are subtle contrasts of hand embroidered silks, woven linens and custom knitted cashmere against sleek shininess of chocolate lacquer.



# Painstaking attention to detail combined with imagination and flair has created a world-class Sailing Yacht

General	
Yard no.	386
Type	Flybridge Cutter Rigged Ketch
Naval Architect	Dubois Naval Architects Ltd
Exterior and Interior design	Redman Whiteley Dixon Ltd
Interior décor	Todhunter Earle Interiors
Project management	Steve Jacover – Yacht Project Management Captain Gordon Percy – Owners Build Captain
Paint Consultants and Inspection	CCS Coating Services
Builder	Royal Huisman
Year of delivery	2010

Hull	Principal dimensions (metric)
Length over all (l.o.a.)	57.49 m / 188.61 ft
Length on design waterline (d.w.l.)	48.95 m / 160.73 ft
Beam max.	11.59 m / 37.99 ft
DWL draft to USK (max) board down	10.80 m / 35.43 ft
DWL draft to USK (min) board up	3.80 m / 12.47 ft
Displacement at DWL	550 tons / 1,212,543 lbs
Gross tonnage	498 GT
Hull speed	17 knots
Range	4000 Nm at 12 knots boat speed

Rig Dimensions	Principal dimensions (metric)
Main rig dimensions	I = 58.67 m / 192.49 ft
	P = 53.60 m / 175.85 ft
	E = 17.25 m / 56.06 ft
	J = 19.25 m / 63.161 ft
Mizzen rig dimensions	Py = 46.51 m / 152.59 ft
	Ey = 14.05 m / 46.10 ft

Sail Areas	Principal dimensions (metric)
Main sail	544 m <sup>2</sup> / 5,857 ft <sup>2</sup>
Staysail	189 m <sup>2</sup> / 2,029 ft <sup>2</sup>
Genoa	821 m <sup>2</sup> / 8,839 ft <sup>2</sup>
Blade jib	491 m <sup>2</sup> / 5,289 ft <sup>2</sup>
Mizzen	399 m <sup>2</sup> / 4,268 ft <sup>2</sup>
Gennekar	1,742 m <sup>2</sup> / 18,747 ft <sup>2</sup>
Mizzen Staysail	538 m <sup>2</sup> / 5,793 ft <sup>2</sup>
Total area up-wind	1,952 m <sup>2</sup> / 21,007 ft <sup>2</sup>
Total area down-wind	2,872 m <sup>2</sup> / 30,908 ft <sup>2</sup>

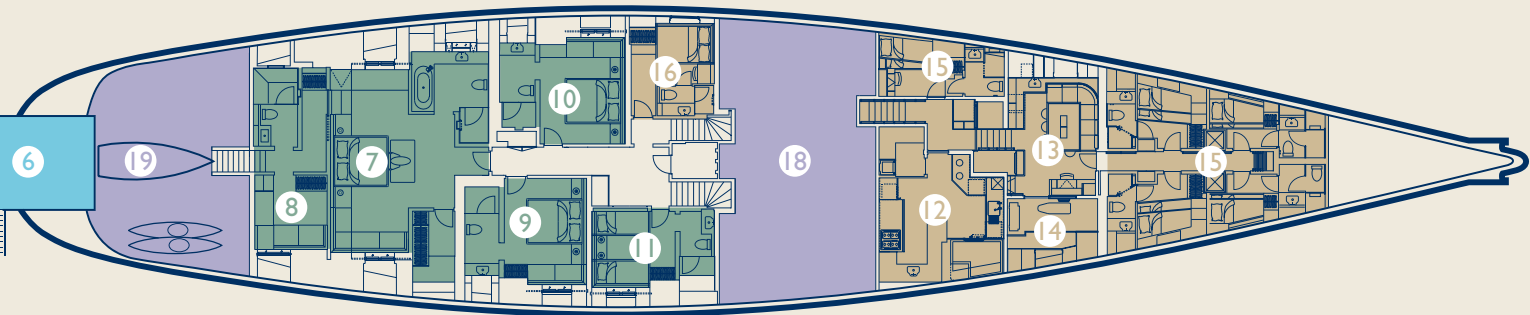
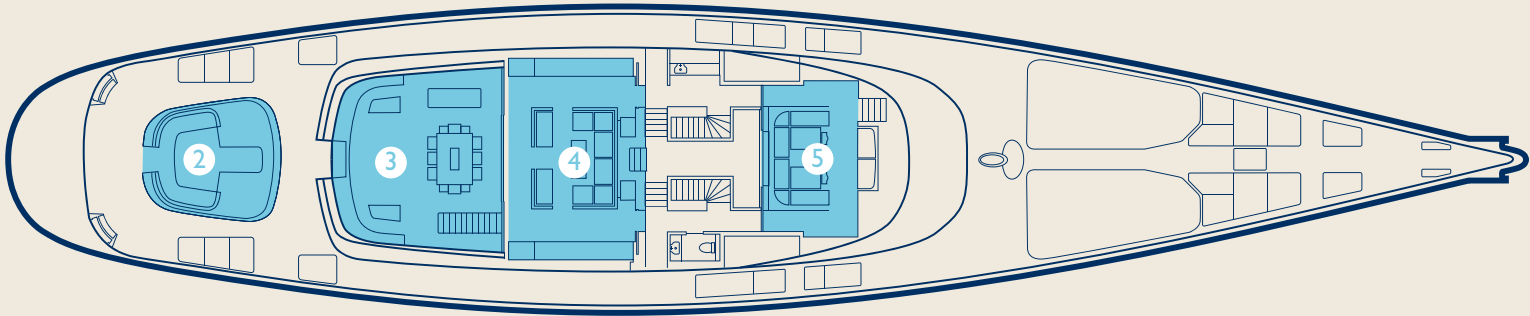
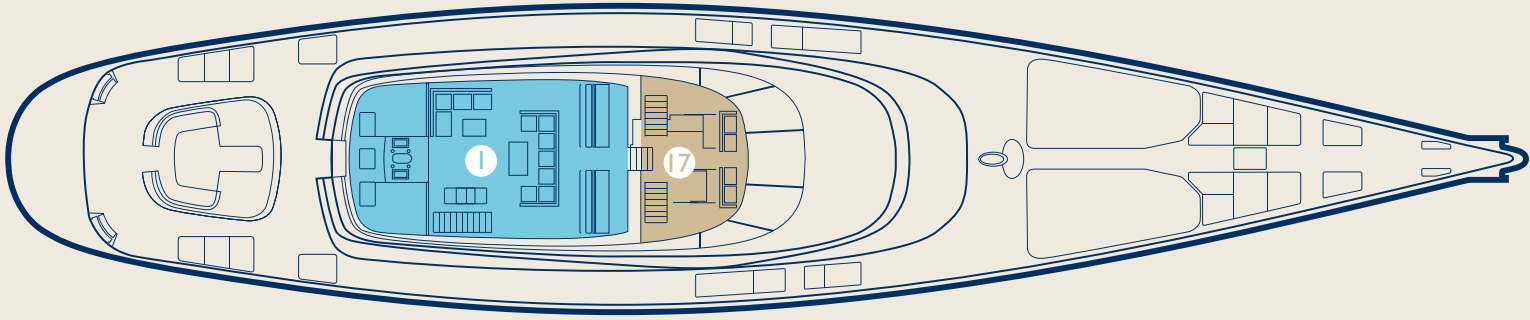
Classification
Built according to MCA LY-2 and Lloyd's X 100A1, SSC, YACHT, MONO, G6, [X] LMC, UMS

Technical Information	
Construction	<p>“Alustar” Temper H321 (AA 5059-H321) aluminium for sheets and “Alustar” Temper H112 (AA5059-H112) for extrusions</p> <p>Centreboard in duplex stainless steel SAF 2205</p>
Steering System	<p>RHS custom designed and built hydraulically operated steering system with full sea state feed back</p> <p>Parker/Autopilot system and DP, Marine Technologies (MT)</p> <p>2x exterior steering stations on the fly-bridge</p> <p>1x interior bridge steering station</p>
Propulsion System	Caterpillar C32 Acert, B-rating, 970 kW @2100 rpm Main engine
Reduction Box	ZF 3350, reduction 4 : 1
Propeller Installation	Wärtsilä Propulsion Controllable pitch propeller, diameter 1500 mm, four blades with high skew
Generators	<p>3x Northern Lights, M1066H, 155 kW – 50 Hz</p> <p>3x RHS/Greentop custom built regenerative soot filters with PLC control</p>
Tank Capacities	<p>Fuel tanks 44,150 l</p> <p>Fresh water tanks 11,700 l</p> <p>Grey / Black water tanks 5,860 l</p>
Thrusters	<p>Hundested FT4RL, 130 kW Bow thruster</p> <p>Hundested FT4RS, 110 kW Stern thruster</p>
Watermaker	<p>Custom-built configuration based on:</p> <p>2x HEM 40/Duplex/4200 in custom frame, capacity 2 x 18,000 litres / day</p>
Pneumatic System	Atlas Copco 2x SF-4-FF Air compressors
Diving System	<p>Bauer diving compressor</p> <p>Hytech Nitrox production system</p>
Hydraulic System	<p>Custom Bosch Rexroth</p> <p>RHS manifold system for sail handling functions</p> <p>3 x Main Engine power take offs</p> <p>3 x Generator power take offs</p> <p>2 x 400vac hydraulic pumps, frequency controlled</p>
Grey / Black Water System	<p>Hamann Mini Compact system with 1,000 litre holding tank - capacity 8,100 l/day</p> <p>Jets Evac vacuum system</p>
Lube Oil / Sludge System	RHS custom-built lube oil / sludge system
Fridge / Freezer System	<p>RHS custom-built remote compressors for fridges and freezers</p> <p>Fridge / Freezer boxes: custom built Rovasta</p>
HVAC	Marine Air system based on fan-coils and fresh air units and dedicated chillers for electronics and racks
Electrical System	<p>230/400 VAC-50Hz Electrical System</p> <p>Magnus Marine, 150kw Shore Power system</p> <p>Alewijnse, Power Management System</p> <p>Clean Net unit for elimination light fluctuation.</p> <p>Central UPS system with 24 x Emergency Lithium Ion batteries</p> <p>8 x Starting battery with chargers (2 sets of 4 batteries)</p> <p>2 x Radio batteries with charger</p> <p>2 x Emergency Crane batteries with charger</p>

Technical Information	
Navigation Equipment	<p>Marine Technologies (MT) Integrated Bridge System (IBS)            MT Dynamic Positioning System (DP)            B&amp;G Hydra 3000 Navigation system            Radio Holland, Saab R4 DGPS/AIS            Cassens &amp; Plath, Navigat 2100 Gyro Compass            Furuno NX-700B Navtex receiver            Thrane &amp; Thrane, Sailor TT-3000EB Satcom C</p>
Steering Stations	RHS / Radio Zeeland full glass touch screen panels with integrated widescreen displays at bridge and at flybridge helm stations
Communication Equipment	<p>Thrane &amp; Thrane, Sailor system 5000 SSB            Sailor, RT 4800 en TT 4802 VHF            Cisco, 2851 Telephone exchange            Seatel, Wavacall 4006 VSAT            Altobridge GSM/3G mobile gateway via VSat            Radio Holland GSM antenna            Thrane &amp; Thrane, FB-500 Fleet broadband</p>
Control Network	Beckhoff CX PLC network based on TCP/IP 100 MB/s
PC Network	<p>Custom computer network based on fibre optic Cisco switches, ship-wide wireless access points, internet by satellite communication, Wi-Fi, Fleet and 3G,            IDEA Vessel Information Organizer (VIO)</p>
Alarm System	<p>RHS Alarm &amp; Monitoring System (Twiznet)            Alarm notification and forwarding system            Eltek Fire alarm system            General / Abandon ship and MOB alarm system            Steward call system</p>
Entertainment	<p>Harris Grant Integrated Entertainment system            Kaleidescape Music &amp; Movie, Blue-Ray, Crestron media matrix, Soundweb audio matrix, streaming guest photo channel            Crestron, iPad &amp; iTouch remote control            Oculus Yacht Eye 3D positioning imaging system            Jetstream internet broadcasting cable/sky television            Nuvo Internet Radio and Streaming Music System</p>
Interior Styling	<p>Interior joinery style as per design of Redman Whiteley Dixon &amp; Todhunter Earle Interiors.            Selected woods and veneers in aged European oak in combination with natural colour fabrics</p>
Glass	<p>Optically tinted double curved chemically hardened glass windows by Yachtglass, the largest glass panels curved in 3 dimensions ever produced.            The Lloyds tested and approved triple layer glass construction requires no storm blinds</p>
Insulation	Rockwool / glass wool; Class approved insulation
Deck Hardware	<p>Rondal custom-built deck stainless steel hardware            cleats, bollards, fairleads, deck drains, etc            To designs by Redman Whitely Dixon</p>

Technical Information	
Hatches	Rondal custom-built hatches
Exterior doors	Custom Rondal double leaf maximum glass sliding aft doors (3.5m opening), electrically driven through spindle drive Side entrance pantograph hinged doors, PCM, electrically operated
Winches	Rondal captive and drum winches Deck Winches 8 x CWL 8000kg Captive Winches 19 x RW-2500kg to RW-18000kg
Anchor System	2x Steen 23-09 hydraulically anchor winches 2x 1,100 lbs stainless steel CQR bow anchors 2x Anchor chain length 165 meter
Side Gangway	Ackerboom custom side gangway, manually operated, on SB
Side Platform	2x RHS custom side platforms, hydraulically operated, on SB/PS
Passarelle	Yachttec custom Passarelle, hydraulically operated
Boat Crane	Concealed Custom C-Quip hydraulic knuckle-boom boat crane for launching the tenders on the fore deck
Stern Platform	Custom RHS boarding/swim platform at variable heights with a custom hydraulically controlled carbon fibre C-quip swimming ladder. Grand stairs provides access to the main deck.
Tenders	2 x Castoldi diesel powered Jet Tender Model 21 stored in concealed forward deck tender wells 34kts
Safety Equipment	6x Zodiac Xtrem 8 persons life rafts Embarkation / pilot ladder Life saving equipment for all persons on board
Fire Equipment	Seawater fire fighting systems Hi-Fog water mist fire fighting systems Novec 1230 for engine room, control room and technical space bridge Argonite for main switchboard Portable fire extinguishers for engine room and accommodation
Sports Equipment	RS Vareo Sailing Dinghy 2x Bic Oassou Kayaks Full Scuba Diving (air and Nitrox) Snorkelling, swimming and water sports Gear Water Skis, Wake board and other toys Beach BBQ Equipment and tent
Paint System	Awlgrip flier and top coat
Spars	Southern Spars New Zealand carbon fibre masts and rollaway carbon booms
Standing Rigging	Southern Spars Rigging continuous EC6+ low profile rigging with titanium spreader tips Gleistein Spectra sheets
Rigging Hydraulics	Rondal furlers
Sails	North Sails 3DL Carbon/Aramid Sails North Sails Nylon Gennekar with C-Tech Snuffair inflatable snuffer North Sails Cuban Fibre Mizzen Staysail

# TWIZZLE



## General Areas

- 1 Fly Bridge
- 2 Aft Seating Cockpit
- 3 Main Deck Cockpit
- 4 Main Saloon
- 5 Dining/TV Saloon
- 6 Swim/Beach Platform

## Owner & Guest Cabins

- 7 Owners Suite
- 8 Owners Study
- 9 Guest Double Cabin I
- 10 Guest Double Cabin 2
- 11 Guest Twin Cabin

## Crew Areas

- 12 Galley
- 13 Crew Mess
- 14 Laundry
- 15 Crew Cabins
- 16 Captain's Cabin
- 17 Bridge/Ship Office

## Technical Areas

- 18 Engine Room
- 19 Lazerette

Note that the Owner's Study can also be used as a single cabin and that the Guest Twin Cabin has a third Pulman bed.

# TWIZZLE

For Charter information  
please contact your  
Charter Agent.

[www.twizzle.org](http://www.twizzle.org)

